

virtufit

CityLine S200i
E-Step Seat
VF15005



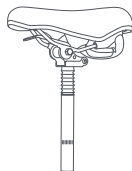
📷 @virtufit_fitness

📺 VirtuFit

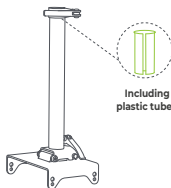
🌐 www.virtufit.com

USER MANUAL

01 - TOOLKIT



Seat Post Saddle Kit (1x)



Foldable Base (1x)



Screw (4x)



Spring Washer (4x)



Flat Washer (4x)



Plastic Locking (2x)



Plastic Positioning Block (2x)



Inner Hexagon 5mm (1x)

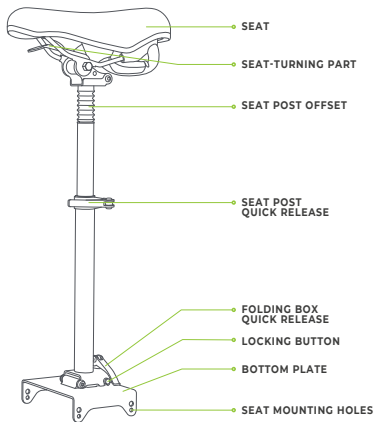


Outer Hexagon (1x)

SPECIFICATIONS

Height Adjustment Range	51–63 cm. This measurement does not include the height from the ground to the E-step pedestal.
Maximum user weight	100 kg
Material	Aluminium Alloy, Steel
Forming	Highly-elastic foam sponge
Product dimensions	22 x 27 x 68 cm (seat on maximum height)
Product weight	1,5 kg

OVERVIEW



SAFETY INSTRUCTIONS

- Ensure that the seat is securely mounted and the two quick releases are locked before each ride.
- When folding the E-step, fold the seat first.
- The E-step is intended for use by a single rider only.
- Do not remove the plastic tube within the seat post, as this will cause the seat post to sink.
- The seat cannot be mounted if a pedestal pad has been installed on the E-Step.

GUARANTEE

The warranty period for this item is 2 years from the day of purchase. The guarantee is only valid when this E-Step is used for activities and normal recreational use and does not cover E-Steps used for rental purposes.

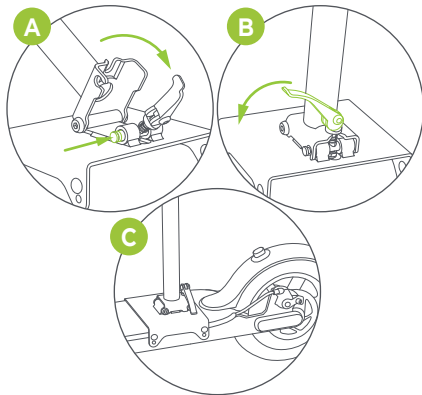
Warranty claims are excluded if the cause of the defect is the result of:

- Maintenance and repair work not carried out by an official dealer.
- Improper use, negligence and/or poor maintenance.
- Failure to maintain the appliance in accordance with the manufacturer's instructions.

ASSEMBLY INSTRUCTIONS (STEP 01-04)

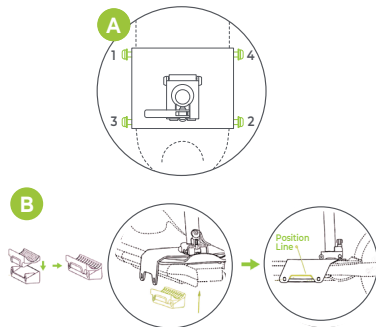
STEP 01 - PLACE THE FOLDABLE BASE

- Press the locking button.
- Connect the seat stay to the locking button.
- Secure the folding box quick release.
- Place the base on the back of the E-Step.



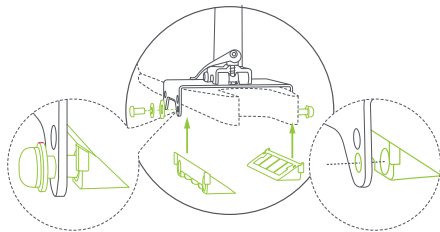
STEP 02 - LOCK THE SCREW

- Place two plastic locking blocks between both sides of the bottom plates and the E-Step.
- Insert each hex screw into the seat mounting hole and pre-tighten them by 8 turns to secure the plastic locking blocks.
- Tighten the screws in the order shown in the figure.



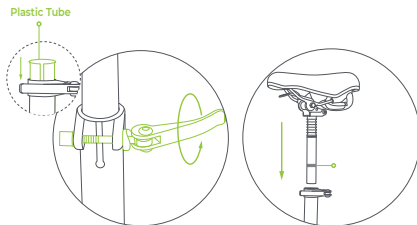
STEP 03 - ALIGN SEAT MOUNTING HOLES

- Align the seat mounting holes with the recess holes of the two locking blocks.
- Pre-tighten the screws.



STEP 04 - MOUNT SEAT POST OFFSET AND SEAT KIT

- Unlock and adjust the seat post quick release.
- Insert the seat post offset into the plastic tube by rotating it.
- Adjust to the desired height.
- Lock the quick release.

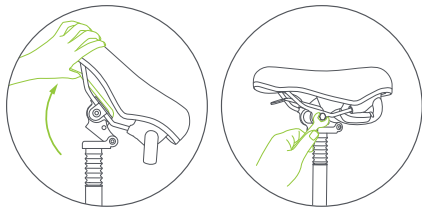


NOTE! Make sure the plastic tube is inside the seat post before mounting.
When adjusting the height, do not expose the minimum insertion mark.

ADJUSTING THE SEAT

⚠ WARNING! Make sure the seat is securely mounted before your ride. If it is not, use an outer hexaxon wrench to tighten the hexagon nut on the adjuster.

- Adjust the seat to the desired position and lock it in place. You can turn and fold the seat using the seat-turning mechanism.



FOLDING AND UNFOLDING

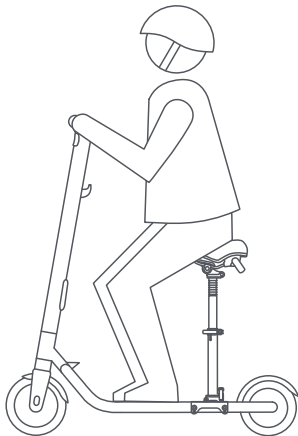
⚠ WARNING! Make sure the seat is securely mounted before your ride. If it is not, use an outer hexaxon wrench to tighten the hexagon nut on the adjuster.

- To fold the E-Scooter Seat, unlock the quick release on the folding box and fold the base.



RIDE BY SITTING

⚠ WARNING! After mounting the seat, ensure all components are securely fastened, especially the two quick releases and the screws on the base, before enjoying a comfortable ride.



virtufit

VIRTUFIT

Twekkelerweg 263
7553 LZ Hengelo
The Netherlands
info@virtufit.nl

VIRTUFIT SERVICE

Do you have a problem with your VirtuFit fitness equipment and would you like to submit a service request? Then scan the QR code on the right and fill in our service form.

